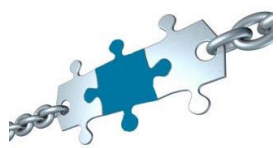


2012 Chamber Connectors



Chair



Jay Wren
Computer Concepts
(308)382-5500
jwren@cccusa.net

Vice-Chair



Rhonda McGuire
Tiffany Square Care Center
(308)384-2333
rmcguire@vhsml.com



Jennifer Barker



John Behrens
Home Federal Bank
(308)398-4904
jbehrens@homefedgi.com



Brad Bell,
Great Western Bank
(308)395-0114
Bradley.bell@greatwesternbank.com



Christa Bootsma



Brenda Branstiter
Workforce Development
(308)385-6300
brenda.branstiter@nebraska.gov



Jason Davis
CCC
(308)398-7421
jdavis@cccneb.edu



Melissa DeLaet
Hope Harbor
(308)385-5190
mdelaet@hopeharborgi.org



Joe Dobrovlny
Equitable Bank
(308)382-3136
jdobrovlny@equitableonline.com



Laura Flores
Z-Wireless
(308)384-0222
laura.flores@gzwireless.com



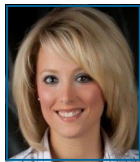
Kelly Grefe
Wells Fargo Bank
(308)382-4800
Kelly.N.Grefe@wellsfargo.com



Melissa Griffith
Conestoga Mall Office
(308)382-4210
mgriffith@jherzog.com



Amanda Groff
Hope Harbor
(308)385-5190
agroff@hopeharborgi.org



Amanda Hanquist
Farmers Insurance Group
308-382-8787,
ahanquist@farmersagent.com



Shay Hayman
Z-Wireless
384-4555
shay.h@zwireless.com



Heidi Isley
Associated Staffing, Inc.
(308)384-4885
heidii@associated-staffing.com



Ruth Jones
ResCare Workforce Services
(308)385-5009
ruthjones@arboret.com



Bradley Keasling
Bellevue Unniversity
(308)381-8988
brad.keasling@bellevue.edu



Ranae Keenan
Associated Staffing, Inc.
(308)384-4111
renaek@associated-staffing.com



Angie King
Associated Staffing, Inc.
(308)384-4885
angiek@associated-staffing.com



Bo Kingery
The Pinnacle Agency
(308)381-1761
bkingery.pinna11@insuremail.net



Pamela Knuth
Howard Johnson Riverside Inn
(308)384-5150
hojosaes@charterinternet.com



Liz Kohout
Vocational Rehabilitation Services
(308)385-5593
liz.kohout@nebraska.gov



Tracy Long



Eric Lorenz
Charter Business
(308)389-4070
eric.lorenz@chartercom.com



Leonard McCarty, Jr.
Capital Business Systems
(308)381-8099
lmccarty@capitalmodern.com



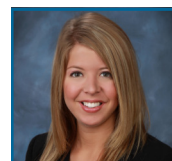
Celia McConkey
Good Samaritan Society
(308)384-3535



Mike McCoy
NE Danger Indoor Pro Football
(308)381-2942
mike.mccoy@bosselman.com



Michael McLagan
10/11 News KOLN KGIN
(308)382-6100
mike.mclagan@1011now.com



Sara McMillan
NE Business Development Center
(308)382-9210
mcmillansa@unk.edu



Shawn Messersmith
Heartland Electric
(308)385-4604
shawn.messersmith@chiefind.com



Mia Murdock
Farm Bureau Financial Services
(308)384-1134
mia.murdock@fbfs.com



Katie Nothner
Primrose Retirement Community
(308)381-4100
knothner@primrosereirement.com



Kiley O'Neill
Viaero
(308)370-1932
kiley.oneill@viaero.com



Sam Quanz-Milton
GI Family Radio
(308)381-1430
squanz@krgi.com



Ryan Rahmann
LaserTec of Nebraska
(308) 647-5277
ryan@ltne.com



Jodi Rauert
Platte Valley State Bank
(308)389-2600
jrauert@pvsb.com



DeAnn Reed
Good Samaritan Society
(308)385-3664
dreed2@good-sam.com



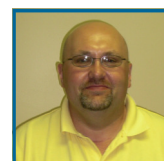
Greg Ruzicka
Chief Construction Co.
(308)389-7222
gregory.ruzicka@chiefind.com



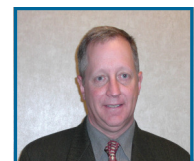
Mary Santin
Golden Living
(308)382-2635
mary.santin@goldenliving.com



Kirk Smith
Duff Roofing
(308)382-5678
ksmith@duffroofing.com



Shane Stocker
H&R Block
(308)382-5250
shane.stocker@hrblock.com



Michael Swanson
Verizon Wireless
(308)398-1000



Jen Thompson
Big Brothers Big Sisters
(308) 384-3456
jen@bbbsgi.org



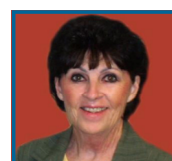
Lee Van Boening
H&R Block
(308) 382-5250
lee.vanboening@tax_hrblock.com



Traci Vauble
Child Advocacy Center
(308)385-5238
children2@kdsi.net



Ashley Wissing
Bickford Cottage
(308)384-3800
ashley.wissing@enrichinghappiness.com



Vivian Walters